

# S/S POLO SHIRT TYPHOON

# VALENTO

## DESCRIPTION

- Two-Tone Short Sleeve Sports Polo Shirt.  
Made of 100% polyester breathable technical fabric, that promotes sweat wicking and quick-drying, ensuring optimal comfort. Contrasting colour on sleeves, collar, yoke and pocket for a distinctive and original style.  
Knitted collar and sleeve cuffs for comfortably fitting.  
A reinforced left chest pocket for convenient storage and showcase the branding.  
Suitable marking methods: screen printing, transfer printing, embroidery, stitching
- Ideal as workwear, sportswear and promotional clothing.



PCS X BOX  
50



PCS X BAG  
1



POLYESTER  
100%



DENSITY  
170 g/m<sup>2</sup>

## CHARACTERISTICS



QD

## APPROXIMATE DIMENSIONS PER SIZE (CM.)

SIZES	ADULT					$\frac{2}{3}$ 3XL
	S	M	L	XL	XXL	3XL
LENGTH	69	72	75	78	81	84
WIDTH	51	54	57	60	63	66

## COLOURS

 Available colours for big  Available colours for adult



white-cement grey



bottle green-black



lotto red-black



mahogany garnet-black



sky blue-royal blue



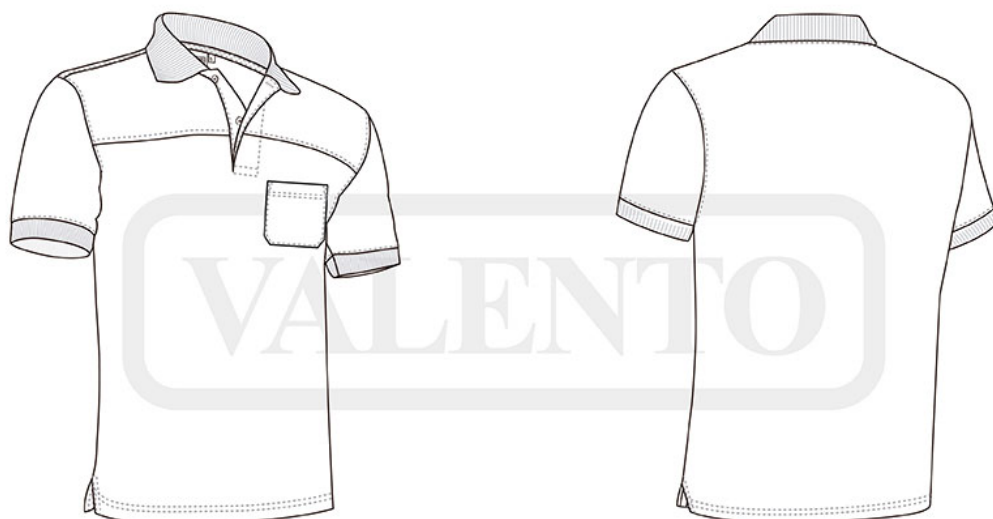
royal blue-black



smoke grey-charcoal grey

Garments containing different colours must be washed with care, in cold water, using a suitable laundry detergent and drying immediately after washing.



## DETAILS

---

