

# S/S POLO SHIRT TAMESIS

# VALENTO



## DESCRIPTION

- Pocketless and Buttonless Short Sleeve Polo Shirt with Metal Hook-and-Eye Opening
- Made of durable and long-lasting cotton-polyester blend pique fabric. Tricot collar and sleeve cuffs for comfortably fitting. Shirt collar with metal hook-and-eye flap opening, ideal for easy detection in food industry
- Overlocked inner seams for added strength and durability. Suitable marking methods: screen printing, transfer printing, embroidery, stitching
- Ideal as workwear and food industry uniforms.



PCS X BOX  
50



PCS X BAG  
5



POLYESTER  
50%



COTTON  
50%



DENSITY  
220 g/m<sup>2</sup>

## APPROXIMATE DIMENSIONS PER SIZE (CM.)

SIZES	ADULT					LARGE
	S	M	L	XL	XXL	
LENGTH	69	72	75	78	81	84
WIDTH	51	54	57	60	63	66

## COLOURS

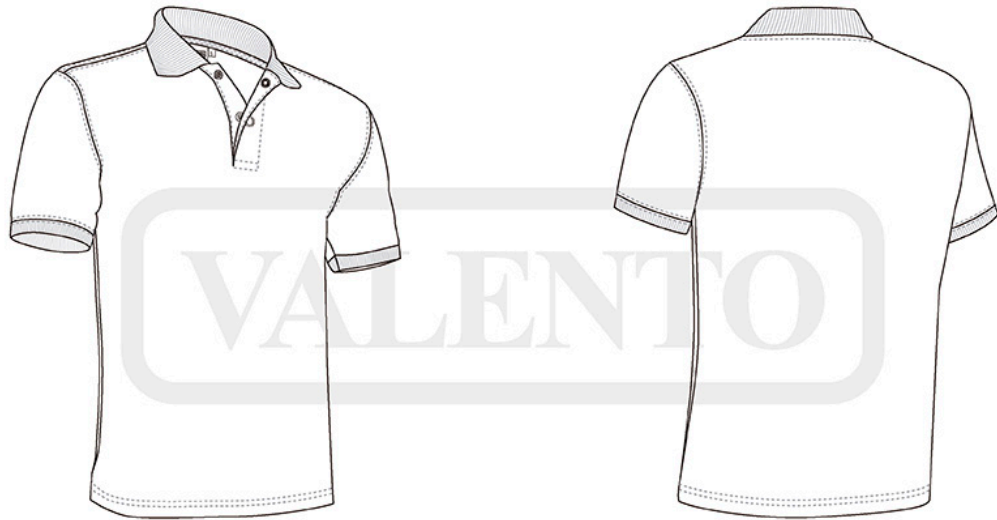
Available colours for big Available colours for adult



white



orion navy blue



## DETAILS

---

