

# L/S HALF-ZIP POLO EUROPA

# VALENTO



## DESCRIPTION

- Long Sleeve Sports Polo Shirt with Thermal Effect. Made of heathered vigore breathable technical fabric infused with elastane providing enhanced mobility, with an inner brushed for excellent thermal insulation
- Half-zip collar opening providing additional ventilation. Elasticated cuffs for comfortably fitting. Overlocked inner seams and double stitching on bottom hem for added strength and durability. Suitable marking methods: screen printing, transfer printing, vinyl application, embroidery, stitching
- Ideal as sportswear, workwear and promotional clothing.



PCS X BOX  
40



PCS X BAG  
1



POLYESTER  
92%



ELASTANE  
8%



DENSITY  
250 g/m2

## CHARACTERISTICS



THERMAL

## APPROXIMATE DIMENSIONS PER SIZE (CM.)

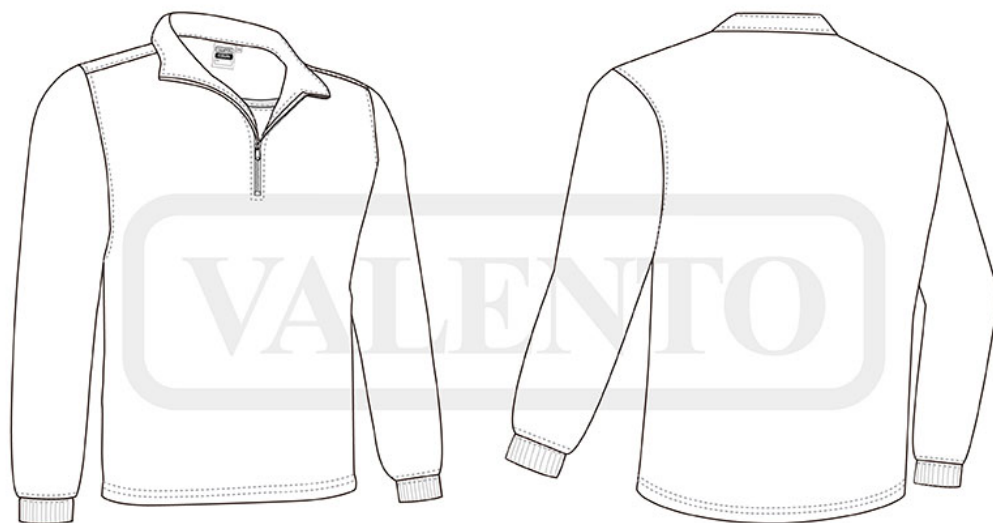
SIZES	ADULT					3/3 3XL
	S	M	L	XL	XXL	3XL
LENGTH	66	69	72	75	78	81
WIDTH	50	53	56	59	62	65

## COLOURS

 Available colours for big  Available colours for adult



 anthracite  
vigore



## DETAILS

---

