

# S/S POLO SHIRT ACE

# VALENTO



## DESCRIPTION

- Two-Tone Short Sleeve Half-Zip Sports Polo Shirt. Made of 100% polyester breathable technical fabric with lobular fibres that promote sweat wicking through its channels, quick-drying ensuring all-day comfort, with an antibacterial finish that minimizes the growth of odour-causing bacteria
- Half-zip collar opening providing additional ventilation. Double stitching on bottom hem and sleeves for added strength and durability. Suitable marking methods: sublimation on white, screen printing, transfer printing, embroidery, stitching
- Ideal for physical activities, sportswear and promotional clothing.



PCS X BOX  
50



PCS X BAG  
1



POLYESTER  
100%



DENSITY  
190 g/m<sup>2</sup>

## CHARACTERISTICS



AB



QD



LOBULAR FIB



SUBLIMATION

## APPROXIMATE DIMENSIONS PER SIZE (CM.)

	ADULT				
SIZES	S	M	L	XL	XXL
LENGTH	64	67	70	73	76
WIDTH	51	54	57	60	63

## COLOURS

 Available colours for adult



white-tropical  
blue

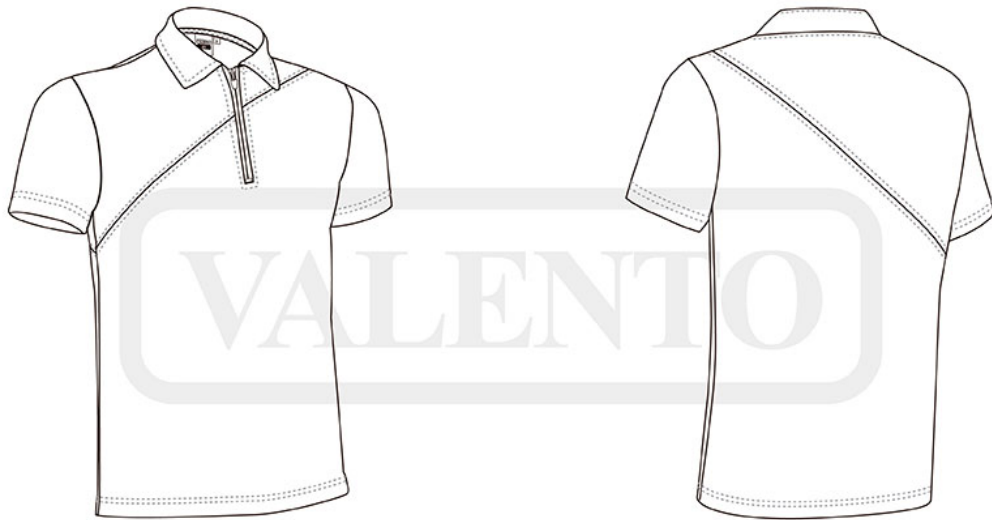


navy blue-  
lotto red



black-fluo  
orange

Garments containing different colours must be washed with care, in cold water, using a suitable laundry detergent and drying immediately after washing.



## DETAILS

---



*Back part*