

FLEECE JACKET THUNDER



DESCRIPTION

- Two-Tone Pocket Fleece Jacket.
Made of micro fleece fabric with outer anti-pilling finish and an inner brushed for optimal thermal insulation and extra comfort. Stand-up collar with full-zip front closure for warmth and comfort, an inner neck tape and a back semi-circular reinforcement to keep its shape.
Elasticated cuffs and straight-cut waist with elastic drawstring and stopper for a better fit and added comfort
- Two slanted flap zippered waist pockets for a secure and convenient storage
- Suitable marking methods: embroidery, stitching.
Ideal as workwear and uniforms, this Fleece Jacket matches all THUNDER collection items (sweatshirt, trousers, T-shirt, polo shirts, parka, softshell jacket, and vest).



PCS X BOX
20



PCS X BAG
1



POLYESTER
100%



DENSITY
300 g/m²

CHARACTERISTICS



THERMAL

APPROXIMATE DIMENSIONS PER SIZE (CM.)

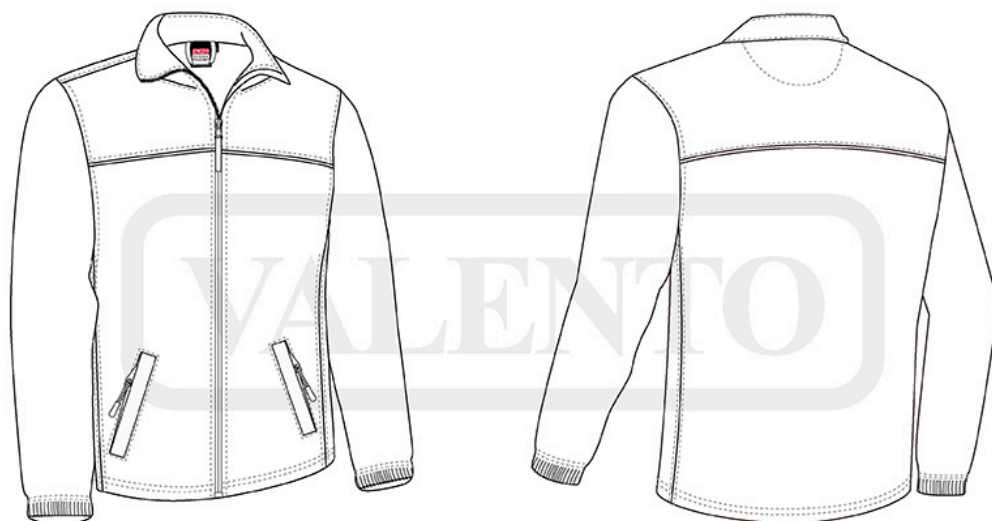
SIZES	ADULT					LARGE
	S	M	L	XL	XXL	
LENGTH	67	70	73	75	78	81
WIDTH	53	56	59	62	65	67

COLOURS

Available colours for big Available colours for adult



Garments containing different colours must be washed with care, in cold water, using a suitable laundry detergent and drying immediately after washing.



DETAILS

