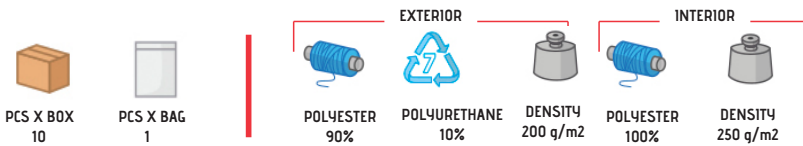


DETACHABLE JACKET SCOOT



DESCRIPTION

- Two-Tone Multi-Pocket Detachable Jacket, so you can easily convert into a Multi-Pocket Vest in seconds. Made of sturdy cotton twill blended with polyester outer fabric for strength and durability, smooth inner lining and inner quilting for ensuring excellent thermal insulation. A jacket that can be easily converted into a vest unzipping the sleeves when you need to
- Elasticated waistband and cuffs for comfortably fitting
- Two front gusseted pockets, two upper flap and hook-and-loop pockets, two slanted pockets, two at intermediate height zippered pockets, a pen holder and an inner hook-and-loop pocket for a secure and convenient storage
- Includes an inside back zip for easy marking with different methods: screen printing, transfer printing, vinyl application, embroidery, stitching
- Ideal as workwear, sportswear and promotional clothing.



PCS X BOX
10

PCS X BAG
1

CHARACTERISTICS



APPROXIMATE DIMENSIONS PER SIZE (CM.)

SIZES	♂ ADULT					♀ LARGE
	S	M	L	XL	XXL	3XL
LENGTH	69	72	75	78	81	84
WIDTH	56	59	62	65	68	71

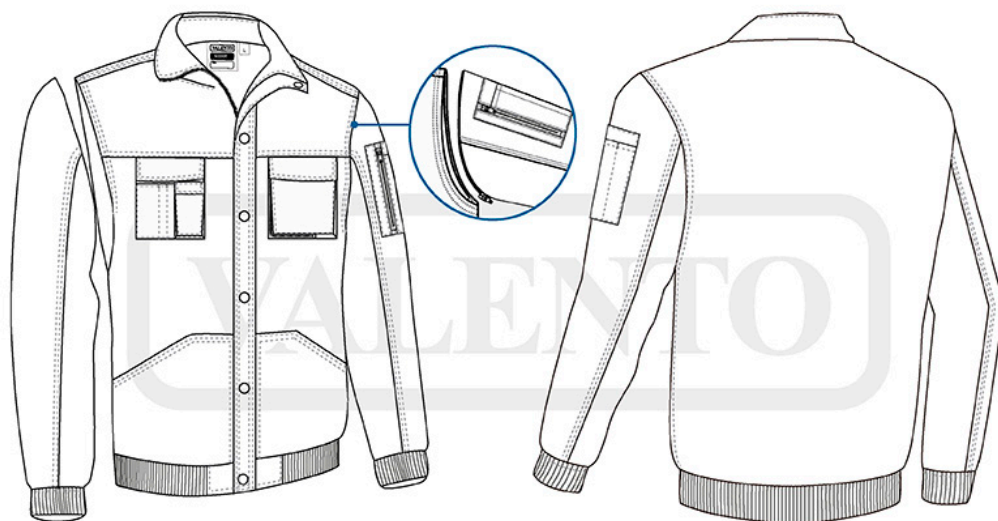
COLOURS

♂ Available colours for adult ♀ Available colours for big



♂ bottle green-kamel brown
 ♂ orion navy lotto red
 ♂ orion navy blue
 ♂ orion navy blue-cement grey
 ♂ charcoal grey-charcoal grey
 ♂ black-sand beige
 ♂ black-black

Garments containing different colours must be washed with care, in cold water, using a suitable laundry detergent and drying immediately after washing.



DETAILS



Back part