

WOMEN L/S SHIRT VENEZIA

VALENTO



DESCRIPTION

- Women's Long Sleeve Slim Fit Shirt with a Pocket.
Made of lightweight crepe fabric for a soft and comfortable feel
- Cuffs and right to left matching button front closure for a better adjustment and greater comfort.
Double-stitched bottom and reinforced seams on sides, shoulders, sleeves and underarms for added strength and durability.
A reinforced left chest pocket for convenient storage and showcase the branding.
Suitable marking methods: screen printing, transfer printing
- Ideal as workwear, corporate uniforms and hospitality clothing.



PCS X BOX
40



PCS X BAG
1



POLYESTER
100%



DENSITY
125 g/m2

APPROXIMATE DIMENSIONS PER SIZE (CM.)

	WOMAN					
SIZES	XS	S	M	L	XL	XXL
LENGTH	61	64	67	70	73	76
WIDTH	46	49	52	55	58	61

COLOURS

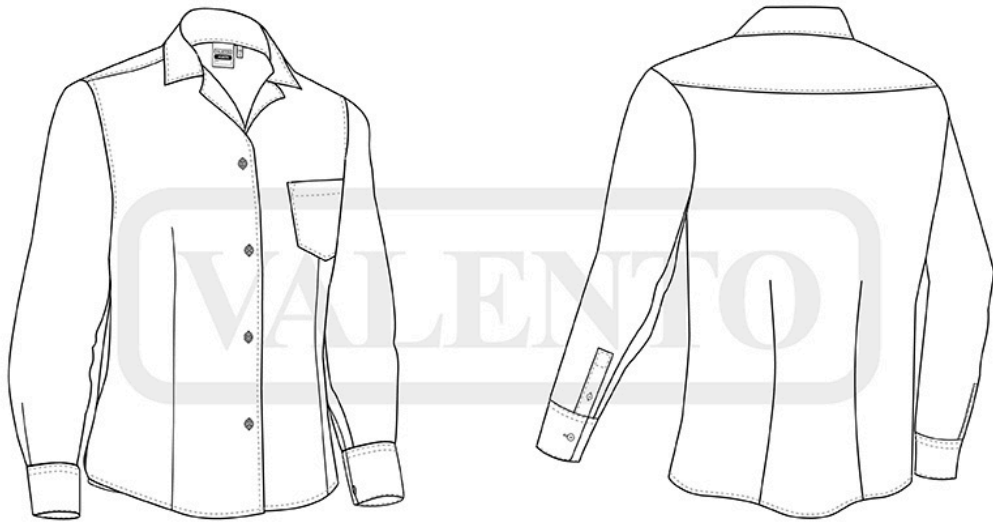
 Available colours for woman




white




black



DETAILS



Back part