

# WOMEN S/S SHIRT STAR



## DESCRIPTION

- Women' Short Sleeve Slim Fit Shirt with a Pocket.  
Made of a lightweight 210 yarn cotton-polyester blend poplin fabric for strength and durability.  
Matching button cuffs and front closure for a better adjustment and greater comfort
- A reinforced left chest pocket for convenient storage and showcase the branding.  
Double-stitched bottom and reinforced seams on sides, shoulders, sleeves and underarms for added strength and durability.  
Suitable marking methods: screen printing, transfer printing, embroidery, stitching
- Ideal as workwear, corporate uniforms and casual wear.



PCS X BOX  
40



PCS X BAG  
1



POLYESTER  
65%



COTTON  
35%



DENSITY  
120 g/m<sup>2</sup>

## APPROXIMATE DIMENSIONS PER SIZE (CM.)

	WOMAN					
SIZES	36/XS	38/S	40/M	42/L	44/XL	46/XXL
LENGTH	64	66	69	72	75	78
CHEST WIDTH	47	50	53	56	59	62
WAIST WIDTH	42	45	48	51	54	57

## COLOURS

Available colours for woman



white



ivory white



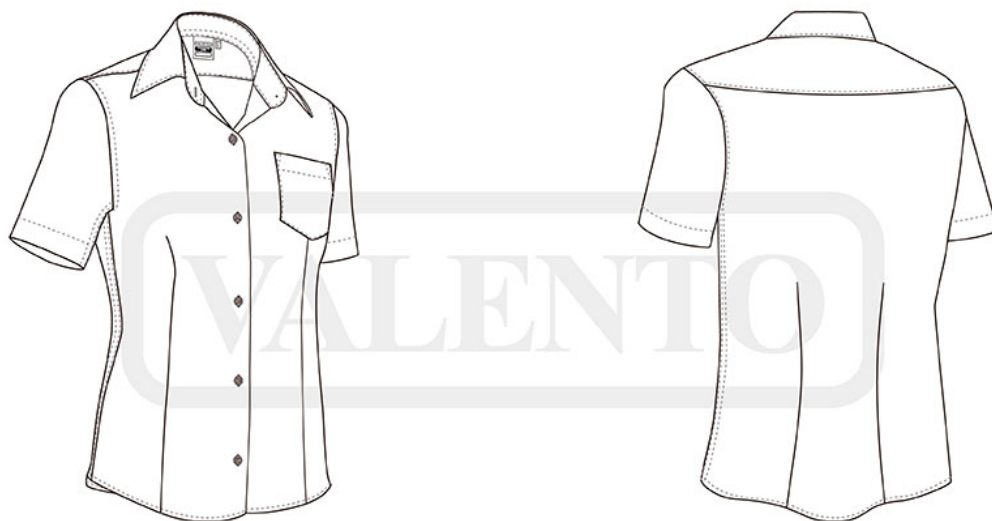
cake pink



sky blue



black



## DETAILS

---



*Back part*