

SMOCK CHARANGA



DESCRIPTION

- Long Sleeve Smock for Local Festivities.
Made of a lightweight cotton-polyester blend poplin fabric for strength and durability
- Elevated open crewneck, matching button front closure featuring a bottom space for optional knot waist fastening.
Gathered yoke for enhanced looseness and added comfort.
Long sleeves with buttoned cuffs for a better adjustment and greater comfort.
Suitable marking methods: screen printing, transfer printing, vinyl application, embroidery, stitching
- Ideal as festive clothing for local festivities, promotional clothing and to dress up groups of people.



PCS X BOX
40



PCS X BAG
1



POLYESTER
65%



COTTON
35%



DENSITY
120 g/m²

APPROXIMATE DIMENSIONS PER SIZE (CM.)

	CHILD				ADULT					LARGE
SIZES	3	4/5	6/8	10/12	S	M	L	XL	XXL	3XL
LENGTH	54	59	64	69	73	76	79	82	85	88
WIDTH	46	50	54	58	64	67	70	73	76	79

COLOURS

Available colours for big Available colours for kid Available colours for adult



white



apple green



amazon green



lemon yellow



party orange



lotto red



magenta pink



sky blue



tropical blue



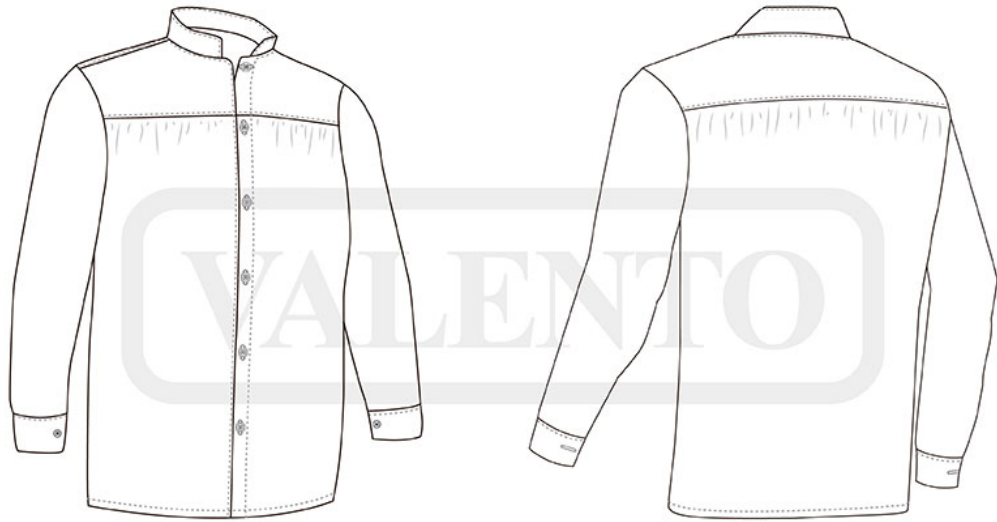
royal blue



orion navy blue



black



DETAILS



Back part