

# JACKET WINTERFELL

**VALENTO**



## DESCRIPTION

- Fleece-Lined Work Jacket with Thermal Effect. Made of a sturdy cotton twill fabric blended with polyester for strength and durability and fleece lining for excellent thermal insulation. Stand-up fleece-lined collar with full-zip front closure for warmth and comfort. Elasticated cuffs and side waistband for a better fit and added comfort.
- Two slanted waist pockets and a reinforced left chest pocket, all zippered, for a secure and convenient storage, and showcase the branding
- Suitable marking methods: screen printing, transfer printing, vinyl application, embroidery, stitching
- Ideal as workwear and uniforms.



PCS X BOX  
20



PCS X BAG  
1



POLYESTER  
65%

EXTERIOR



COTTON  
35%



DENSITY  
210 g/m<sup>2</sup>



POLYESTER  
100%

INTERIOR



DENSITY  
220 g/m<sup>2</sup>

## CHARACTERISTICS



EXTRA THERM

## APPROXIMATE DIMENSIONS PER SIZE (CM.)

SIZES	ADULT					LARGE
	S	M	L	XL	XXL	
LENGTH	66	69	72	75	78	81
WIDTH	55	58	61	64	67	70

## COLOURS

Available colours for big Available colours for adult



white



bluish blue



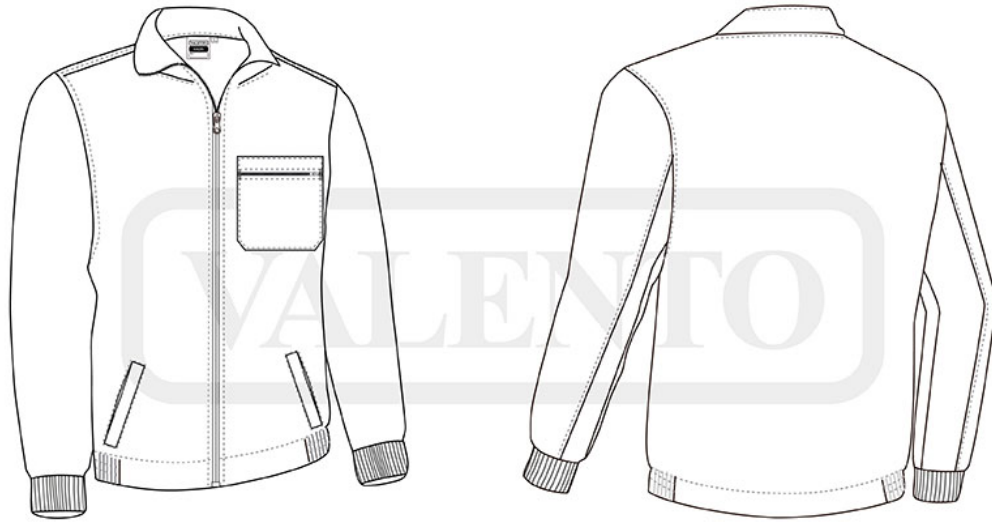
orion navy blue



cement grey



black



## DETAILS

---



---

*Inside polar*



---

*Back part*