

WOMEN QUILTED COAT VIENA

VALENTO



DESCRIPTION

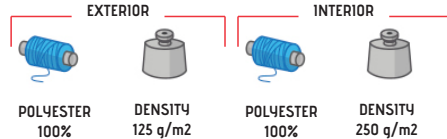
- Women's Quilted Jacket with Thermal Effect
- Made of water-repellent outer Loft flat weave, smooth inner lining and inner quilting for ensuring excellent thermal insulation through channels
- Stand-up double layer collar with full-zip front closure including a chin guard for warmth and comfort. Straight-cut waist with adjustable elastic drawstring and stopper for a better fit and added comfort
- Two vertical zippered waist pockets for a secure and convenient storage. Includes an inside back zip for easy marking with different methods: screen printing, transfer printing, vinyl application, embroidery, stitching
- Ideal as promotional clothing and casual wear.



PCS X BOX
10



PCS X BAG
1



CHARACTERISTICS



PADED



EXTRA THERM



LOFT



WR FABRIC

APPROXIMATE DIMENSIONS PER SIZE (CM.)

SIZES	ADULT					
	XS	S	M	L	XL	XXL
LENGTH	60	63	66	69	72	75
WIDTH	49	52	55	58	61	64

COLOURS

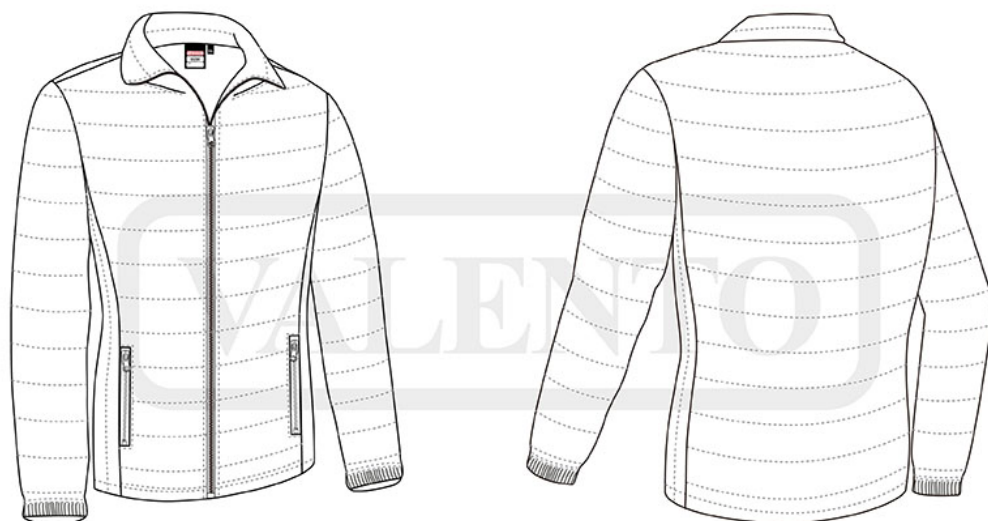
Available colours for adult



orion navy blue



black



DETAILS



Back part