

# SOFTSHELL JACKET MAKALU



## DESCRIPTION

- Two-Tone Reinforced Softshell Fleece Jacket
- Made of three-layered stretchy softshell fabric (micro fleece outer and inner layers, breathable mid-layer) with windproof effect and high thermal insulation
- Waterproof fabric reinforcements on shoulders and elbows for added durability and extra comfort. Stand-up double layer collar with full-zip front closure including a chin guard for warmth and comfort. Two slanted zippered waist pockets for a secure and convenient storage. Suitable marking methods: embroidery, stitching
- Ideal as sportswear, workwear and promotional clothing.

PCS X BOX 10	PCS X BAG 1	POLYESTER 91%	POLYURETHANE 9%	DENSITY 475 g/m <sup>2</sup>

## CHARACTERISTICS

WB	EXTRA THERM	SOFTSHELL

## APPROXIMATE DIMENSIONS PER SIZE (CM.)

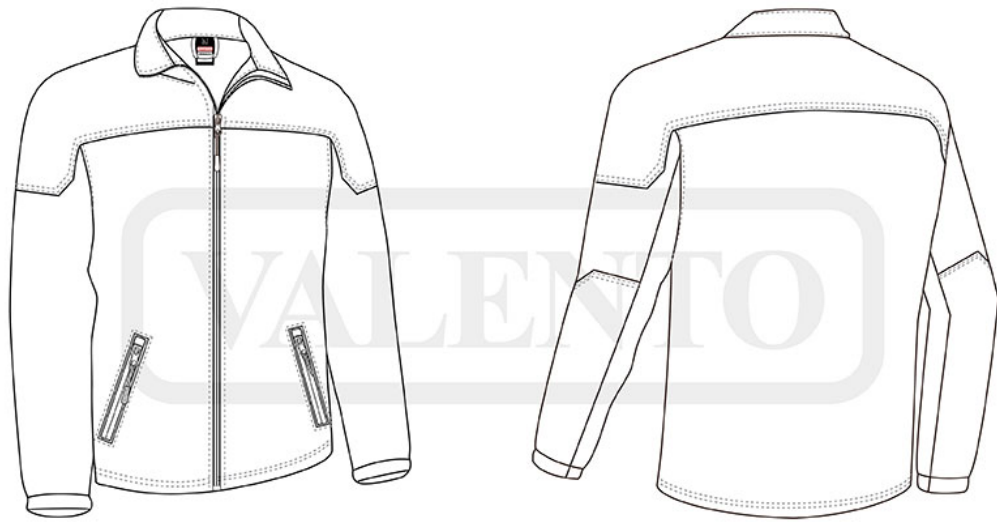
	CHILD				ADULT				
SIZES	3	4/5	6/8	10/12	S	M	L	XL	XXL
LENGTH	48	53	58	63	67	70	73	76	79
WIDTH	37	41	45	49	54	57	60	63	66

## COLOURS

Available colours for kid Available colours for adult

military green- black	lotto red-black	royal blue- black	orion navy blue- black	charcoal grey- black	black-black

Garments containing different colours must be washed with care, in cold water, using a suitable laundry detergent and drying immediately after washing.



## DETAILS

---



*Back part*