

FLEECE JACKET GLASTONBURY

VALENTO



DESCRIPTION

- Reinforced Pocket Fleece Jacket

Made of thick Jacquard fleece fabric with an inner brushed for optimal thermal insulation and extra comfort, Canvas fabric reinforcements on high-wear areas for added strength and durability.

Stand-up double layer collar with full-zip front closure for warmth and comfort.

Elasticated piping finish on cuffs and waistband for a better fitting and added comfort.

Two slanted fleece-lined waist pockets and a reinforced left chest pocket, all zippered, for a secure and convenient storage, and showcase the branding

- Suitable marking methods: embroidery, stitching.
Ideal as workwear.



PCS X BOX
20



PCS X BAG
1



POLYESTER
100%



DENSITY
310 g/m2

CHARACTERISTICS



EXTRA THERM

APPROXIMATE DIMENSIONS PER SIZE (CM.)

SIZES	ADULT					LARGE
	S	M	L	XL	XXL	
LENGTH	67	70	73	76	79	82
WIDTH	53	56	59	62	65	68

COLOURS

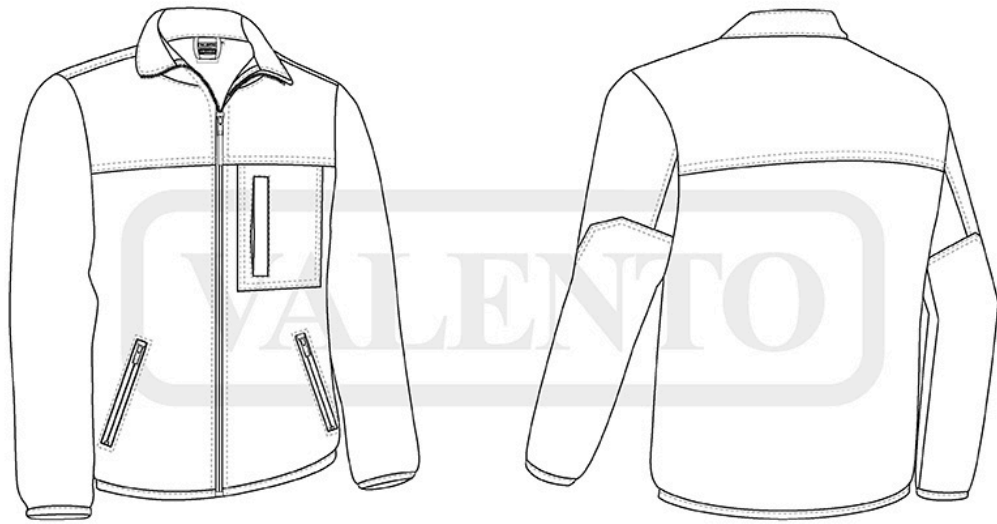
Available colours for big Available colours for adult



orion navy blue



black



DETAILS



Back part