

# SOFTSHELL JACKET EPSILON

# VALENTO



## DESCRIPTION

- Multi-Pocket Softshell Jacket.  
Made of a three-layered stretchy softshell fabric (a water-repellent outer layer, a breathable mid-layer and micro fleece inner layer) providing windproof and water-repellent properties, as well as excellent thermal insulation
- Stand-up collar with full-zip front closure for effortless functionality and practicality.  
Elasticated waistband and cuffs for comfortably fitting
- Two slanted waist pockets and a vertical left chest pocket, all zippered and fleece-lined, for a secure and convenient storage, and extra warmth.  
Suitable marking methods: embroidery, stitching and anti-sublimation heat-stickers
- Ideal as workwear, promotional clothing and sportswear.



PCS X BOX  
20



PCS X BAG  
1



POLYESTER  
85%



POLYURETHANE  
10%



ELASTANE  
5%



DENSITY  
350 g/m<sup>2</sup>

## CHARACTERISTICS



WB



EXTRA THERM



SOFTSHELL



WR FABRIC

## APPROXIMATE DIMENSIONS PER SIZE (CM.)

SIZES	ADULT					3/3 3XL
	S	M	L	XL	XXL	3XL
LENGTH	67	70	72	74	77	80
WIDTH	54	57	60	63	66	69

## COLOURS

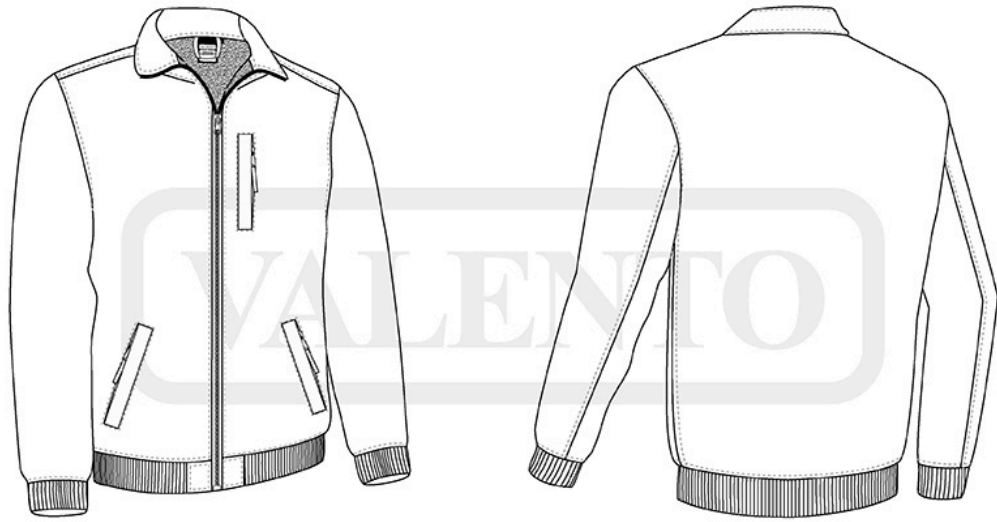
Available colours for big Available colours for adult



orion navy blue



black



## DETAILS

---



*Back part*