

JACKET DYNAMITE



DESCRIPTION

- Two-Tone Multi-Pocket Work Jacket. Made of cotton blended with polyester Canvas fabric for strength and durability, with water-repellent finish for extra comfort
- Stand-up collar with full-zip front closure for effortless functionality and practicality. Elasticated cuffs and waistband for comfortably fitting
- An inner hook-and-loop pocket, two front gusseted pockets and side slits leading to two more pockets, an upper left pocket, a right one for accessories and two pen holders, all four with flap and hook-and-loop closure and a puller for easy opening, anti-puncture system for a secure and convenient storage. Includes an inside back zip for easy marking with different methods: screen printing, embroidery, transfer printing, stitching, vinyl application
- Ideal as workwear and uniforms, pairs well with DYNAMITE work trousers.



PCS X BOX
20



PCS X BAG
1



POLYESTER
65%

EXTERIOR



COTTON
35%



DENSITY
280 g/m2



POLYESTER
65%

INTERIOR



COTTON
35%



DENSITY
120 g/m2

CHARACTERISTICS



WR FABRIC

APPROXIMATE DIMENSIONS PER SIZE (CM.)

SIZES	ADULT					3/3 3XL
	S	M	L	XL	XXL	3XL
LENGTH	67	70	72	75	77	80
WIDTH	54	57	60	63	66	69

COLOURS

Available colours for big Available colours for adult



chocolate brown-black



bottle green-black



orion navy blue-black

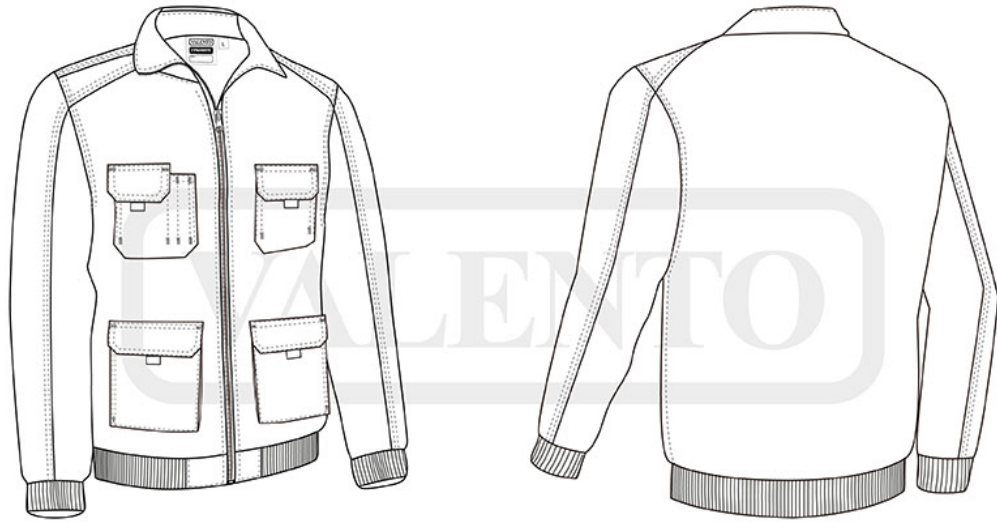


steel blue-black



charcoal grey-black

Garments containing different colours must be washed with care, in cold water, using a suitable laundry detergent and drying immediately after washing.



DETAILS



Back part