

# SOFTSHELL JACKET CALEDONIA

# VALENTO



## DESCRIPTION

- Reinforced Two-Tone Softshell Jacket.  
Made of a three-layered stretchy softshell fabric (a water-repellent outer layer, a breathable mid-layer and micro fleece inner layer) providing windproof and water-repellent properties, as well as excellent thermal insulation, also includes Ripstop fabric reinforcements in high-wear areas for added durability. Stand-up double layer collar with inner sherpa lining and full-zip front closure for warmth and comfort. Straight-cut waist with adjustable elastic drawstring and stopper, elasticated cuffs for a better fit and added comfort.
- Two slanted waist pockets and a vertical left chest pocket, all zippered, for a secure and convenient storage. Includes an inside back zip for easy marking with different methods: embroidery, stitching and anti-sublimation heat-stickers. Ideal for adventure sports and as workwear.



PCS X BOX  
20



PCS X BAG  
1



POLYESTER  
85%



POLYURETHANE  
10%



ELASTANE  
5%



DENSITY  
350 g/m<sup>2</sup>

## CHARACTERISTICS



WB



EXTRA THERM



RIPSTOP



SOFTSHELL



WR FABRIC

## APPROXIMATE DIMENSIONS PER SIZE (CM.)

SIZES	ADULT					3/3 3XL
	S	M	L	XL	XXL	3XL
LENGTH	71	74	76	79	82	85
WIDTH	52	55	58	61	64	67

## COLOURS

Available colours for adult Available colours for big



military green-  
black



lotto red-black

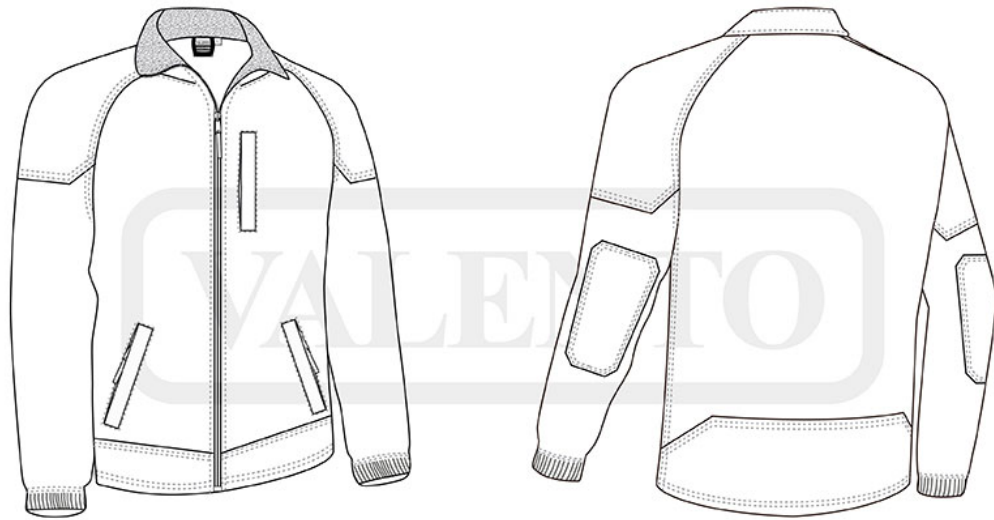


steel blue-  
black



walnut brown-  
black

Garments containing different colours must be washed with care, in cold water, using a suitable laundry detergent and drying immediately after washing.



## DETAILS

---



---

*Back part*