

SCRUB TOP BEATRIZ

VALENTO



DESCRIPTION

- Women' Slim Fit Short Sleeve V-Neck Scrub Top.
Made of a sturdy cotton twill fabric blended with polyester for strength and durability.
Wide V-neck for optimal comfort and a refreshing feel.
Metal-buttoned front closure for added warmth and comfort
- Two front pockets and a left chest patch pocket for convenient storage and showcase the branding
- Suitable marking methods: screen printing, transfer printing, vinyl application, embroidery, stitching.
Ideal as workwear, healthcare uniforms and beauty uniforms.



PCS X BOX
50



PCS X BAG
1



POLYESTER
65%



COTTON
35%



DENSITY
200 g/m2

APPROXIMATE DIMENSIONS PER SIZE (CM.)

	WOMAN					
SIZES	XS	S	M	L	XL	XXL
LENGTH	59	62	65	68	71	74
WIDTH	46	49	52	55	58	61

COLOURS

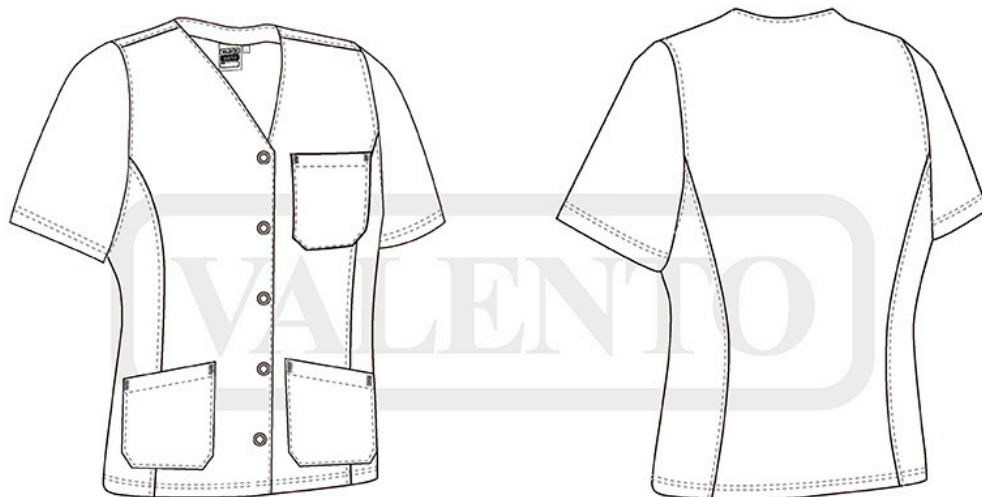
 Available colours for woman




white




black



DETAILS



Back part