

SOFTSHELL JACKET AIRFORCE

VALENTO



DESCRIPTION

- Pocket Softshell Jacket.
Made of a three-layered stretchy softshell fabric (a water-repellent outer layer, a breathable mid-layer and micro fleece inner layer) providing windproof and water-repellent properties, as well as excellent thermal insulation
- Stand-up collar and full-zip flap and matching button front closure for greater comfort
- Adjustable cuffs with hook-and-loop fastening, straight-cut waist with adjustable elastic drawstring and stopper for a better fit and added comfort
- Two slanted waist pockets and a vertical left chest pocket, all zippered, for a secure and convenient storage.
Suitable marking methods: embroidery, stitching and anti-sublimation heat-stickers.
Ideal as workwear, promotional clothing and sportswear.



PCS X BOX
20



PCS X BAG
1



POLYESTER
85%



POLYURETHANE
10%



ELASTANE
5%



DENSITY
350 g/m²

CHARACTERISTICS



WB

EXTRA THERM



SOFTSHELL



WR FABRIC

APPROXIMATE DIMENSIONS PER SIZE (CM.)

SIZES	ADULT					3/3 3XL
	S	M	L	XL	XXL	3XL
LENGTH	71	74	76	79	81	84
WIDTH	54	57	60	63	66	69

COLOURS

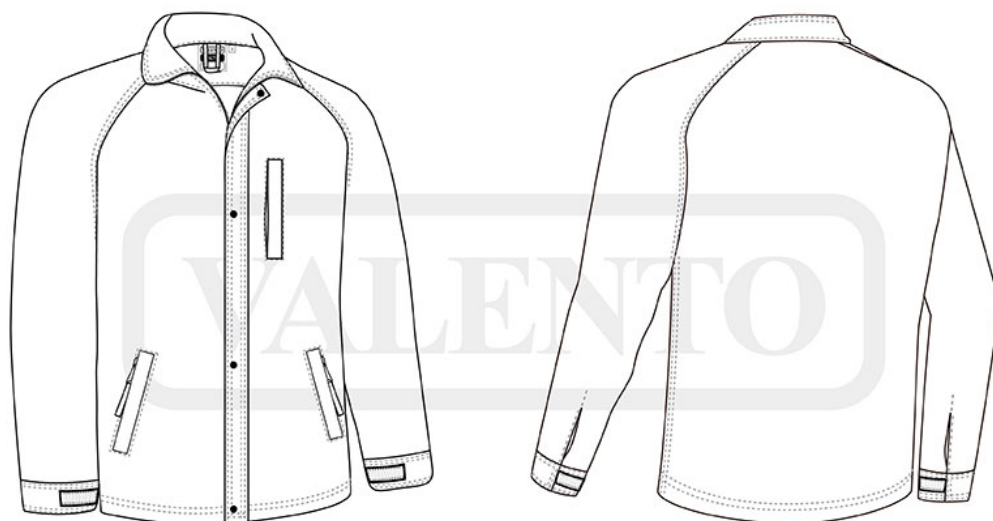
Available colours for big Available colours for adult



orion navy blue



black



DETAILS



Back part