



DESCRIPTION

- Two-Tone Half-Zip Short Sleeve Cycling Jersey
- Made of Bird-Eye breathable technical fabric, that promotes sweat wicking and quick-drying, ensuring optimal comfort
- An elastic band with non-slip silicone strip on the inner waist, providing excellent lumbar support and garment stability
- A spacious back pocket divided into three compartments for convenient storage
- Double stitching on bottom hem and sleeves for added strength and durability
- Suitable marking methods: sublimation on white, screen printing, transfer printing, vinyl application, embroidery, stitching
- Ideal for both individual cycling and team wear.



PCS X BOX
50



PCS X BAG
1



POLYESTER
100%



DENSITY
145 g/m²

CHARACTERISTICS



QD SUBLIMATION

APPROXIMATE DIMENSIONS PER SIZE (CM.)

	ADULT				
SIZES	S	M	L	XL	XXL
LENGTH	67	70	73	76	79
WIDTH	49	52	55	58	61

COLOURS

Available colours for adult



white-royal blue

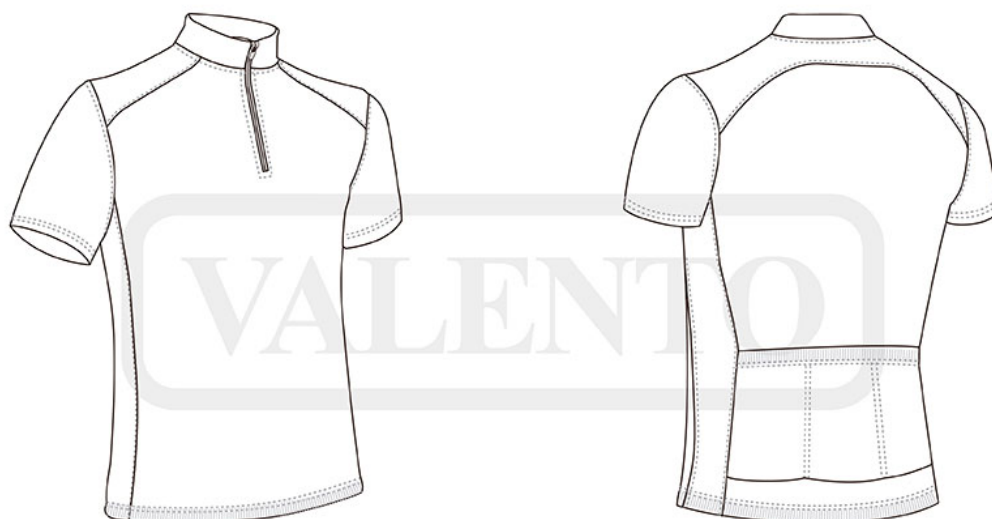


white-black



fluo yellow-black

Garments containing different colours must be washed with care, in cold water, using a suitable laundry detergent and drying immediately after washing.



DETAILS



Detail: back pocket



Back part