

LAB COAT SAHARA

VALENTO



DESCRIPTION

- Long Sleeve Short Lab Coat with Straight Cuffs
- Made of a sturdy cotton twill fabric blended with polyester for strength and durability. A wide V-neck shirt collar, for optimal comfort and a refreshing feel. Button front closure, and a waistband with sewn-on tape at the back for added comfort
- Two front pockets and a left chest patch pocket for convenient storage and showcase the branding. Suitable marking methods: screen printing, vinyl application, transfer printing, embroidery, stitching. Ideal as workwear and uniforms.



PCS X BOX
30



PCS X BAG
1



POLYESTER
65%



COTTON
35%



DENSITY
210 g/m2

APPROXIMATE DIMENSIONS PER SIZE (CM.)

SIZES	ADULT					LARGE
	S	M	L	XL	XXL	
LENGTH	72	75	77	80	82	85
WIDTH	54	57	60	63	66	69

COLOURS

Available colours for big Available colours for adult



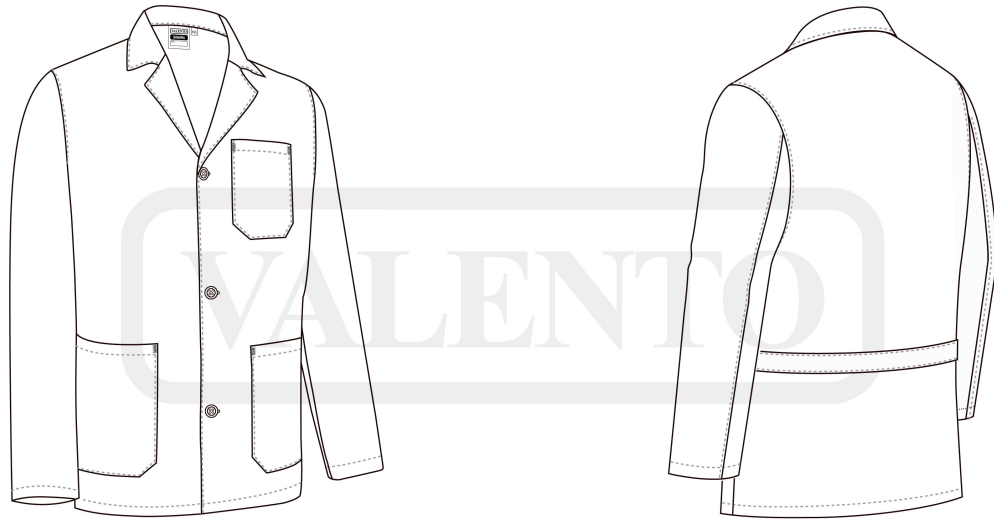
white



orion navy blue



cement grey



DETAILS



Back part