

# WOMEN LAB COAT ALANIS

**VALENTO**



## DESCRIPTION

- Women' Short Sleeve Slim Fit Striped Lab Coat
- Made of lightweight flat weave, using dyed yarn and vertical striped design, ensuring strength and durability
- Shirt collar with wide V-neck, for optimal comfort and a refreshing feel
- Right to left button front closure and a waistband with sewn-on-tape at the back for added comfort
- Two front pockets and a left chest patch pocket for convenient storage and showcase the branding
- Suitable marking methods: screen printing, vinyl application, transfer printing, embroidery, stitching
- Ideal as workwear and uniforms.



PCS X BOX  
40



PCS X BAG  
1



POLYESTER  
65%



COTTON  
35%



DENSITY  
140 g/m2

## APPROXIMATE DIMENSIONS PER SIZE (CM.)

SIZES	WOMAN					
	XS	S	M	L	XL	XXL
LENGTH	89	91	93	95	97	99
CHEST WIDTH	50	53	56	59	62	65
WAIST WIDTH	48	51	53	56	58	61

## COLOURS

Available colours for woman



white-apple green



white-party orange



white-lotto red

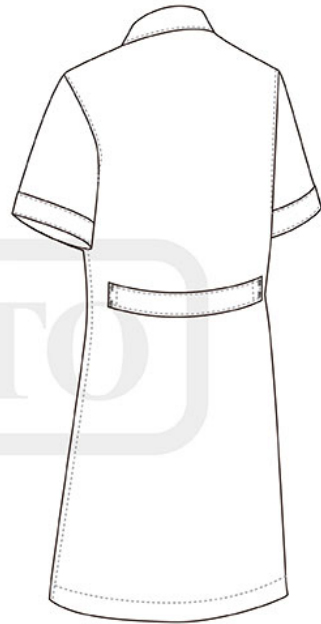


white-bubblegum pink



white-sky blue

Garments containing different colours must be washed with care, in cold water, using a suitable laundry detergent and drying immediately after washing.



**DETAILS**

---



*Back part*