



DESCRIPTION

- Medical Scrub.
Made of lightweight and flexible microfiber breathable fabric
- Short sleeve scrub top with a wide V-neck, for optimal comfort and a refreshing feel, bottom hem with side slits for enhanced mobility, two front patch pockets and a left chest pocket, including a pen holder for convenient storage and showcase the branding
- Pocketless trousers with elasticated waistband and adjustable drawstring for a better fitting and added comfort.
Suitable marking methods: screen printing, transfer printing, stitching, vinyl application, embroidery, stitching.
Ideal as workwear, healthcare uniforms, beauty uniforms and more, available as a complete set, not sold separately.



APPROXIMATE DIMENSIONS PER SIZE (CM.)

SIZES	ADULT							LARGE
	XS	S	M	L	XL	XXL	3XL	
JACKET LENGTH	63	66	69	72	75	78	81	
JACKET WIDTH	50	53	56	59	62	65	68	
LARGO PANTALON	101	103	105	107	109	111	113	
SIZE EQUIVALENCY	34-35-36	37-38-39	40-41-42	43-44-45	46-47-48	49-50-51	52-53-54	

COLOURS

Available colours for big Available colours for adult



dolphin blue



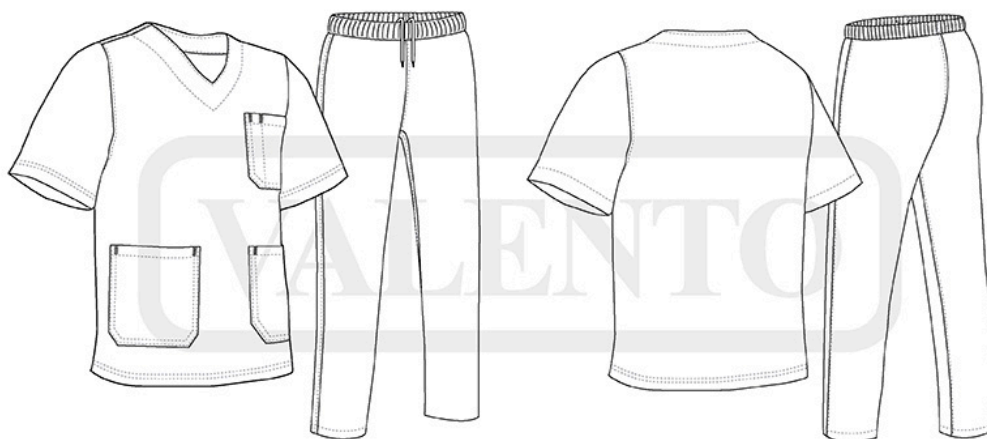
orion navy blue



cement grey



black



DETAILS



Back part